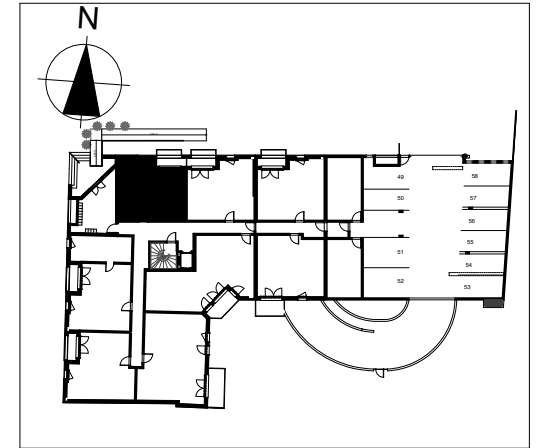
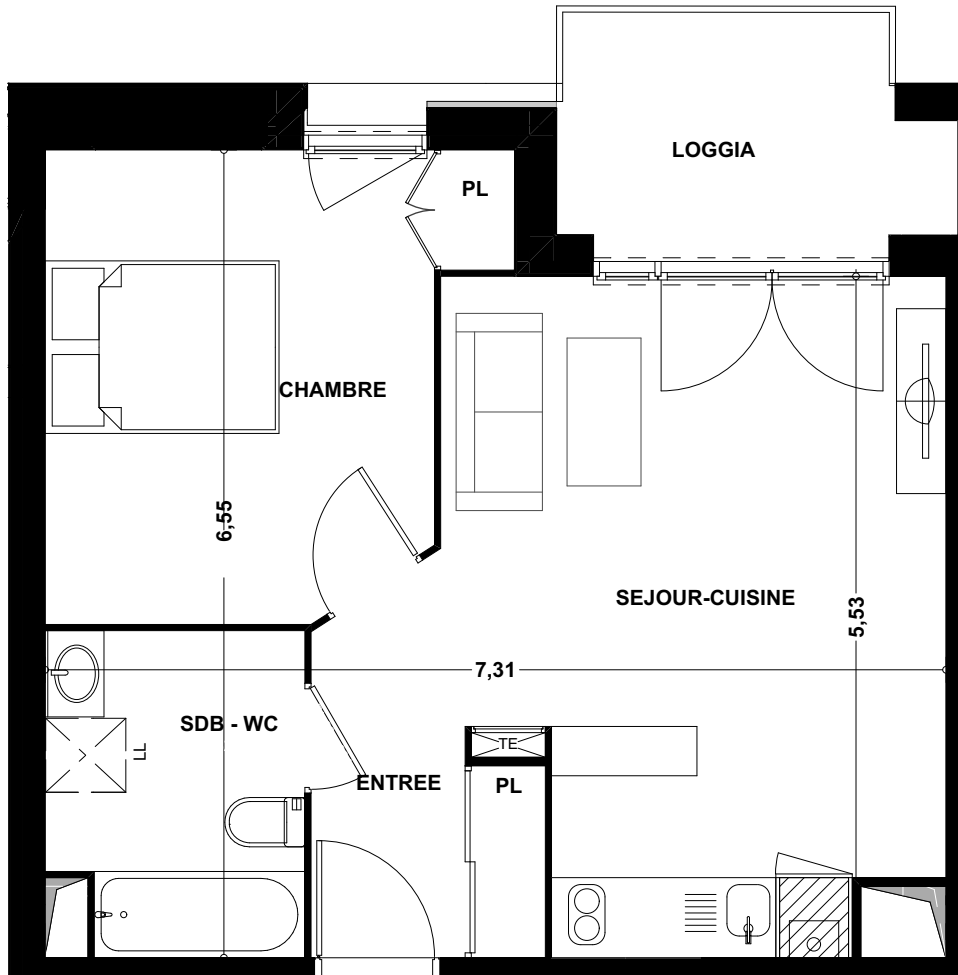
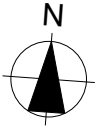


LES ACACIAS



Appartement T2

Bâtiment A

N° 1

Niveau RDC

Entrée + placard	3,29 m2
Séjour + cuisine	21,65 m2
Chambre + placard	12,42 m2
Salle de bains + wc	5,32 m2

Surface Habitable 42,68 m2
Loggia 5,35 m2

Surface Totale 48,03 m2



PATRICK MASSAUX - ARCHITECTE DPLG

(Le présent document est susceptible de modifications techniques ou administratives.)

14/03/2017

TAGERIM
PROMOTION