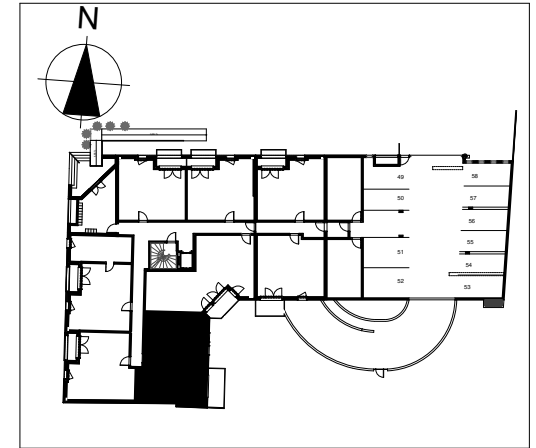
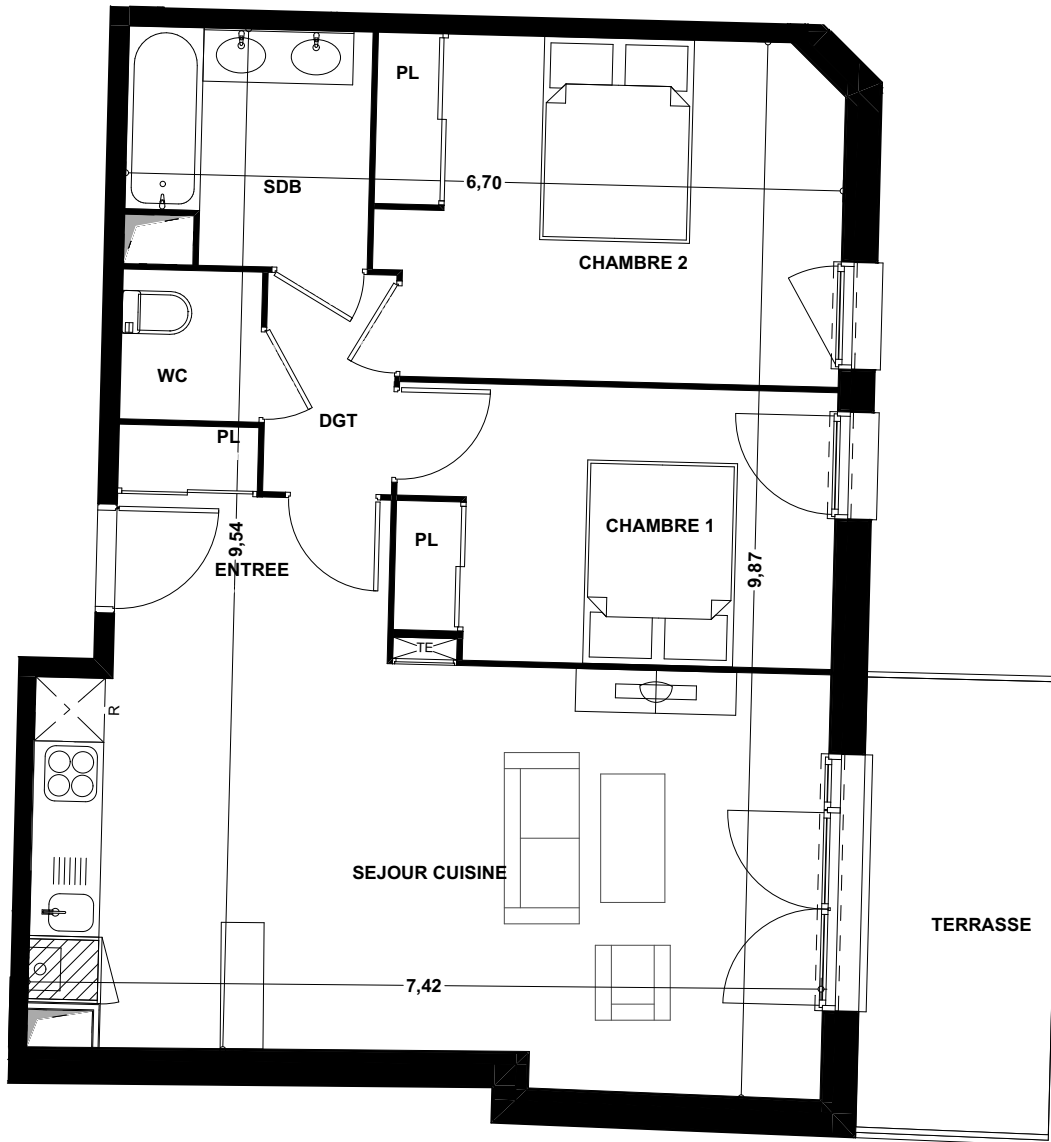
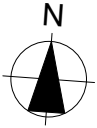


LES ACACIAS



Appartement T3

Bâtiment A

N° 6

Niveau RDC

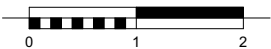
Entrée + placard	4,69 m ²
Séjour + cuisine	27,36 m ²
Dégagement	2,48 m ²
Chambre 1 + placard	10,32 m ²
Chambre 2 + placard	13,53 m ²
Salle de bains	4,70 m ²
WC	1,83 m ²

Surface Habitable 64,91 m²

Terrasse 7,60 m²

Surface Totale 72,51 m²

TAGERIM
PROMOTION



PATRICK MASSAUX - ARCHITECTE DPLG

(Le présent document est susceptible de modifications techniques ou administratives.)

14/03/2017