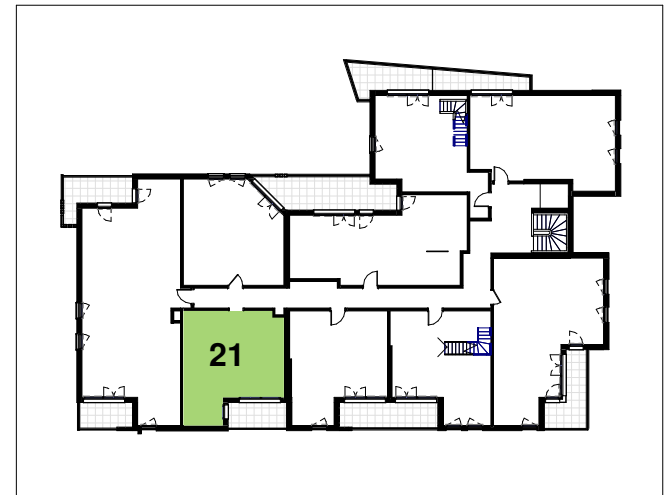
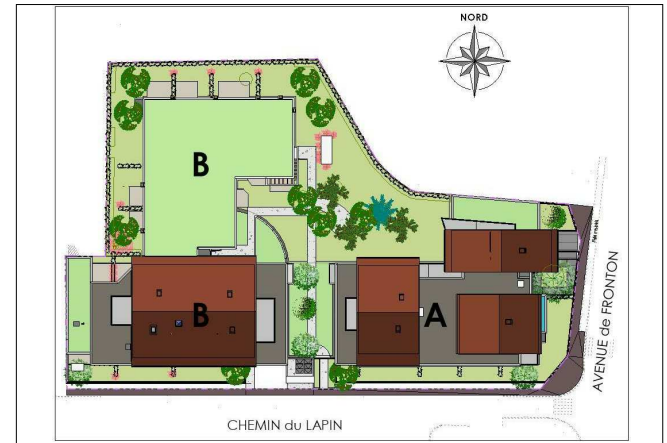
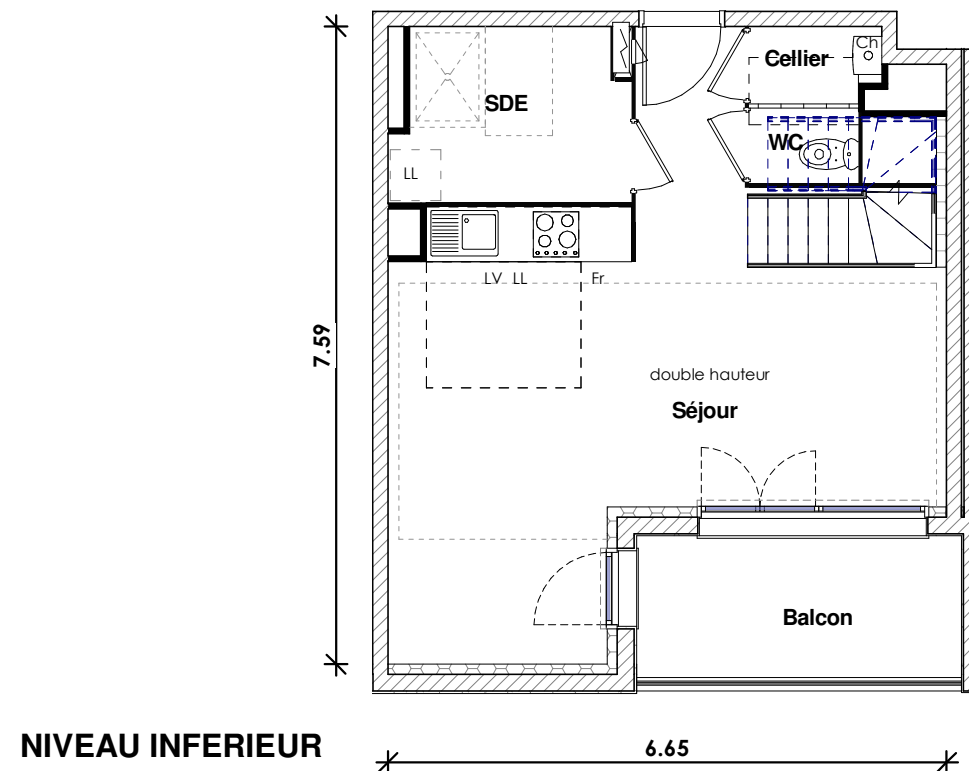
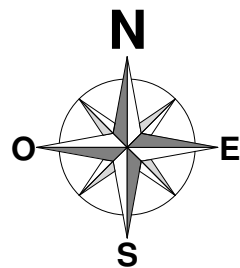
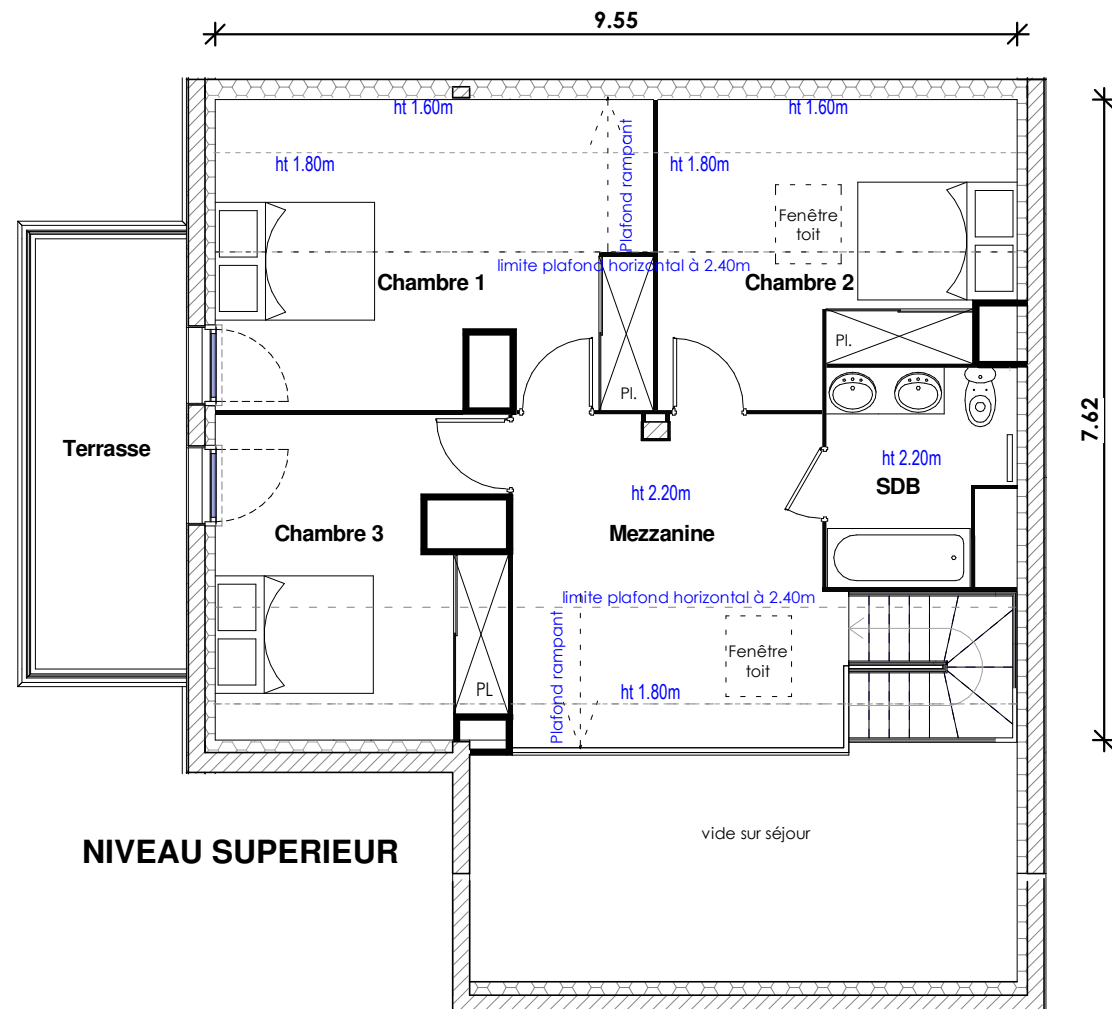


RESIDENCE LAUTREC



APPARTEMENT T4duplex

BATIMENT	A
n° App.	21
Niveau	R+2
	Ht<1.80m

Buanderie	5.59m ²	
Séjour	30.00m ²	
WC	1.17m ²	
Cellier	1.39m ²	3.39m ²
Chambre 1	15.44m ²	2.78m ²
Chambre 2	11.48m ²	1.21m ²
Chambre 3	11.41m ²	
SdB	5.26m ²	
Mezzanine	13.19m ²	2.18m ²

Surface Habitable : 94.93m² 9.56m²

Balcon 6.53m²
Terrasse 9.22m²

Surface Totale : 110.68m²

TAGERIM
PROMOTION