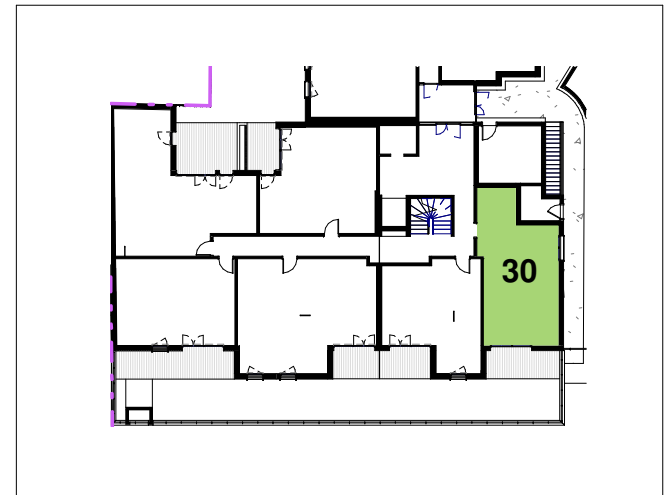
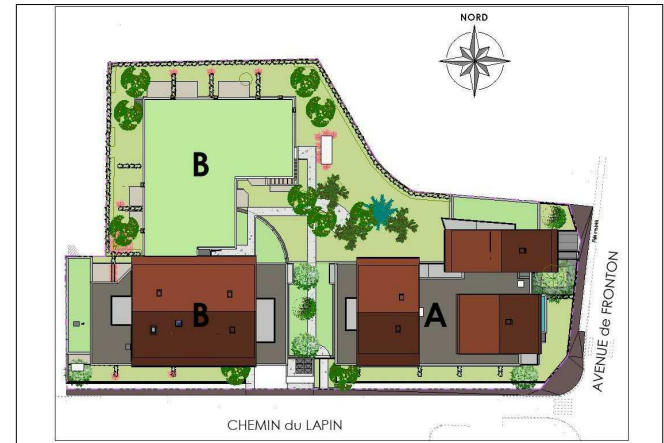
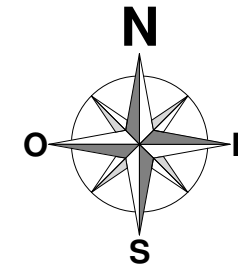
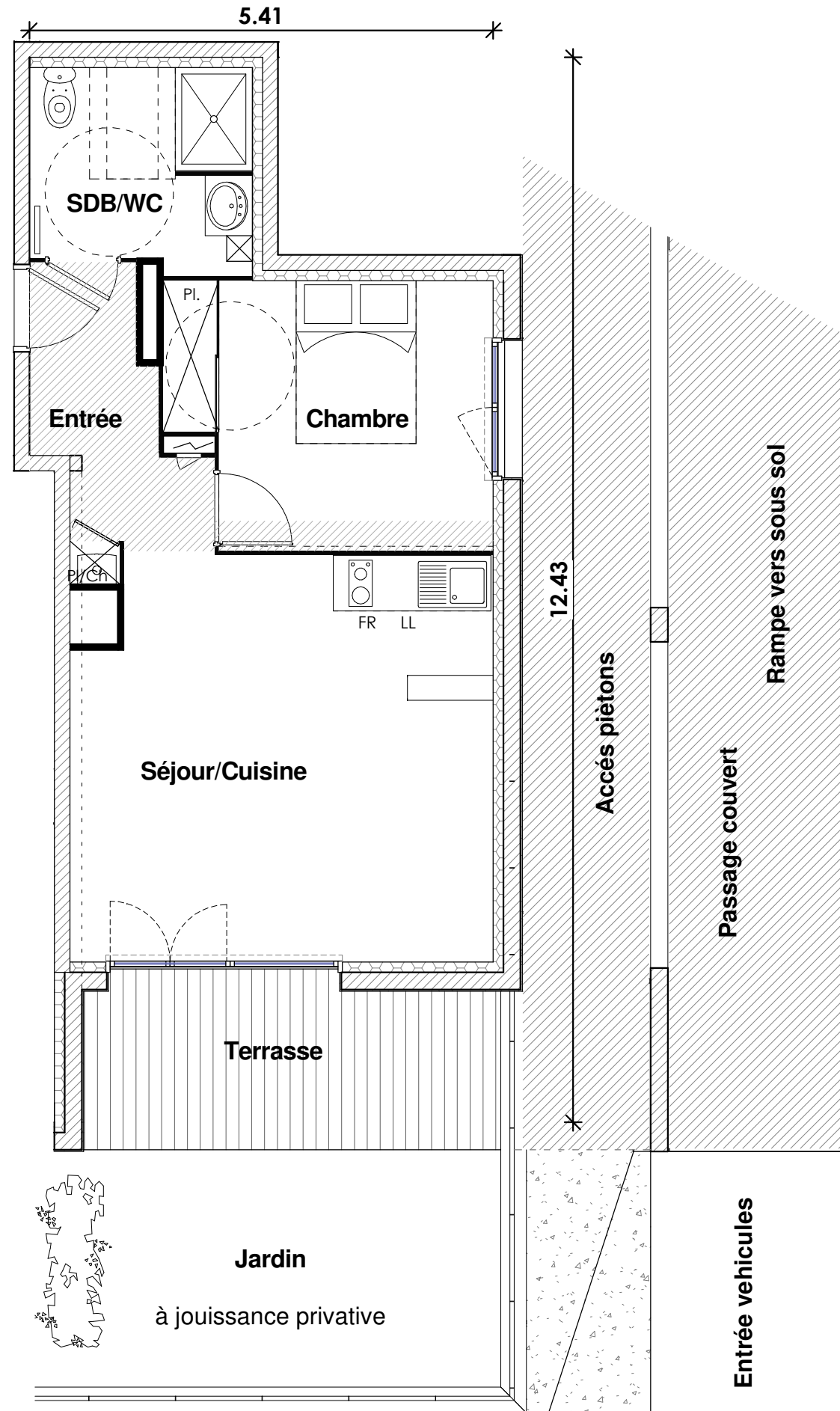


RESIDENCE LAUTREC



APPARTEMENT T2

BATIMENT B
n° App. 30
Niveau RDC

Entrée	5.03m ²
Séjour/Cuisine	22.92m ²
SDB/WC	5.95m ²
Chambre	11.24m ²

Surface Habitable : 45.14m²
 Terrasse 9.00m²

Surface Totale : 54.14m²
 Jardin environ 13.60m²

