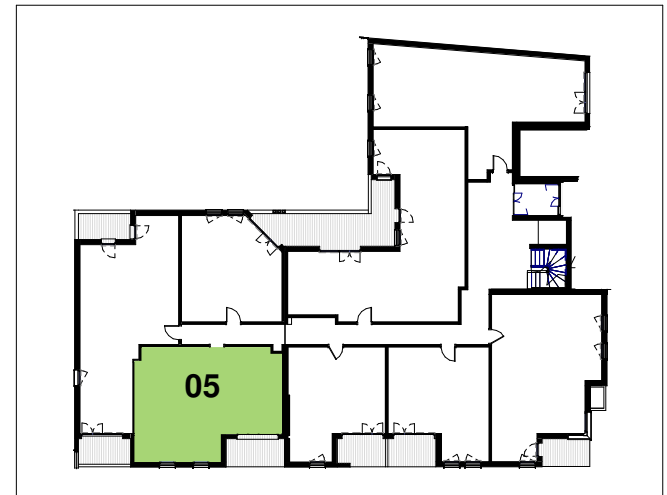
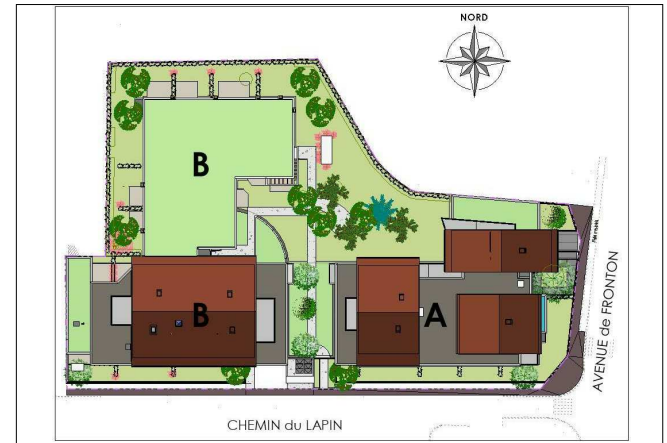
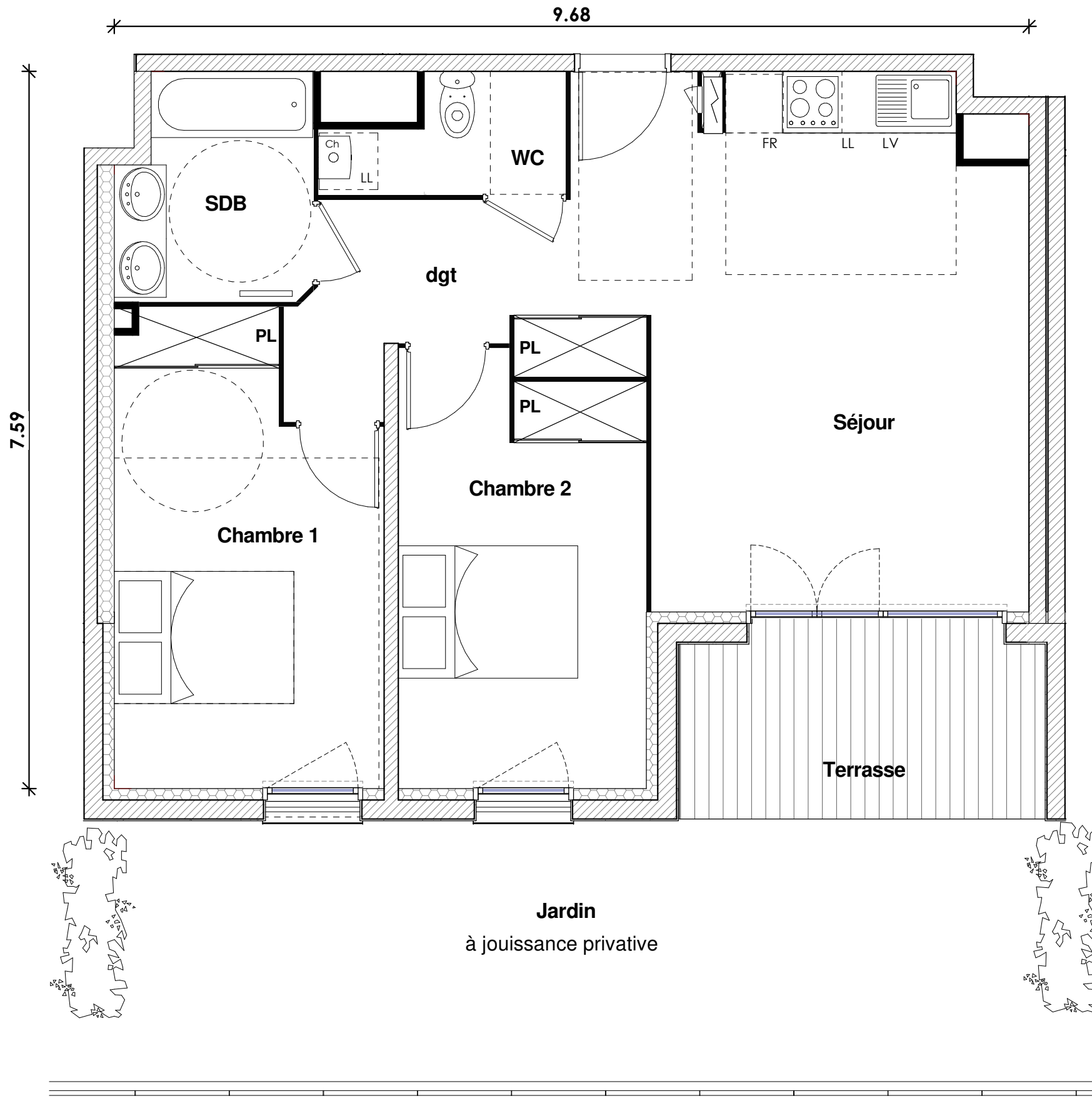


# RESIDENCE LAUTREC



APPARTEMENT	T3
BATIMENT	A
n° App.	05
Niveau	RDC
Séjour	24.98m <sup>2</sup>
Chambre 1	13.07m <sup>2</sup>
Chambre 2	11.70m <sup>2</sup>
SDB	4.74m <sup>2</sup>
WC	2.75m <sup>2</sup>
Dgt	4.91m <sup>2</sup>
<b>Surface Habitable :</b>	<b>62.15m<sup>2</sup></b>
Terrasse RDC	7.18m <sup>2</sup>
<b>Surface Totale :</b>	<b>69.33m<sup>2</sup></b>
Jardin environ	27.50m <sup>2</sup>

