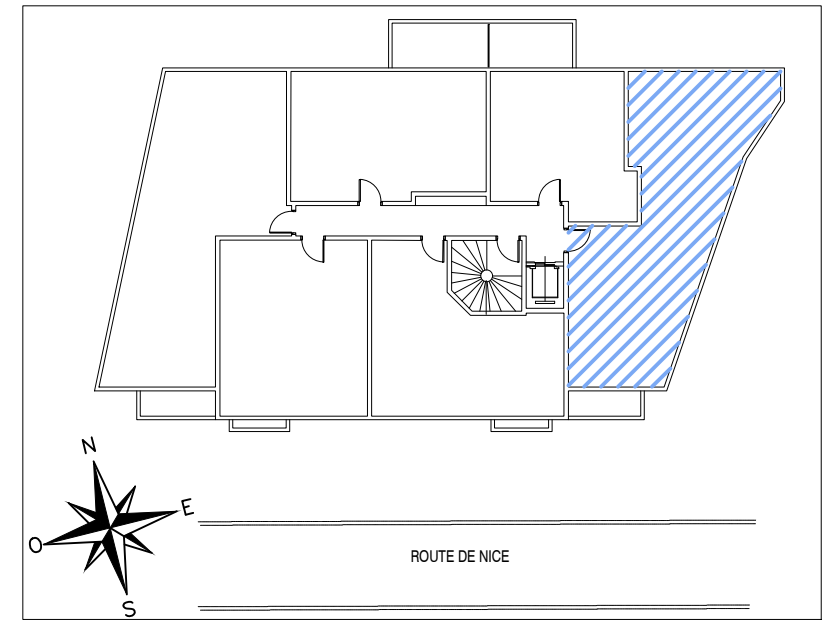
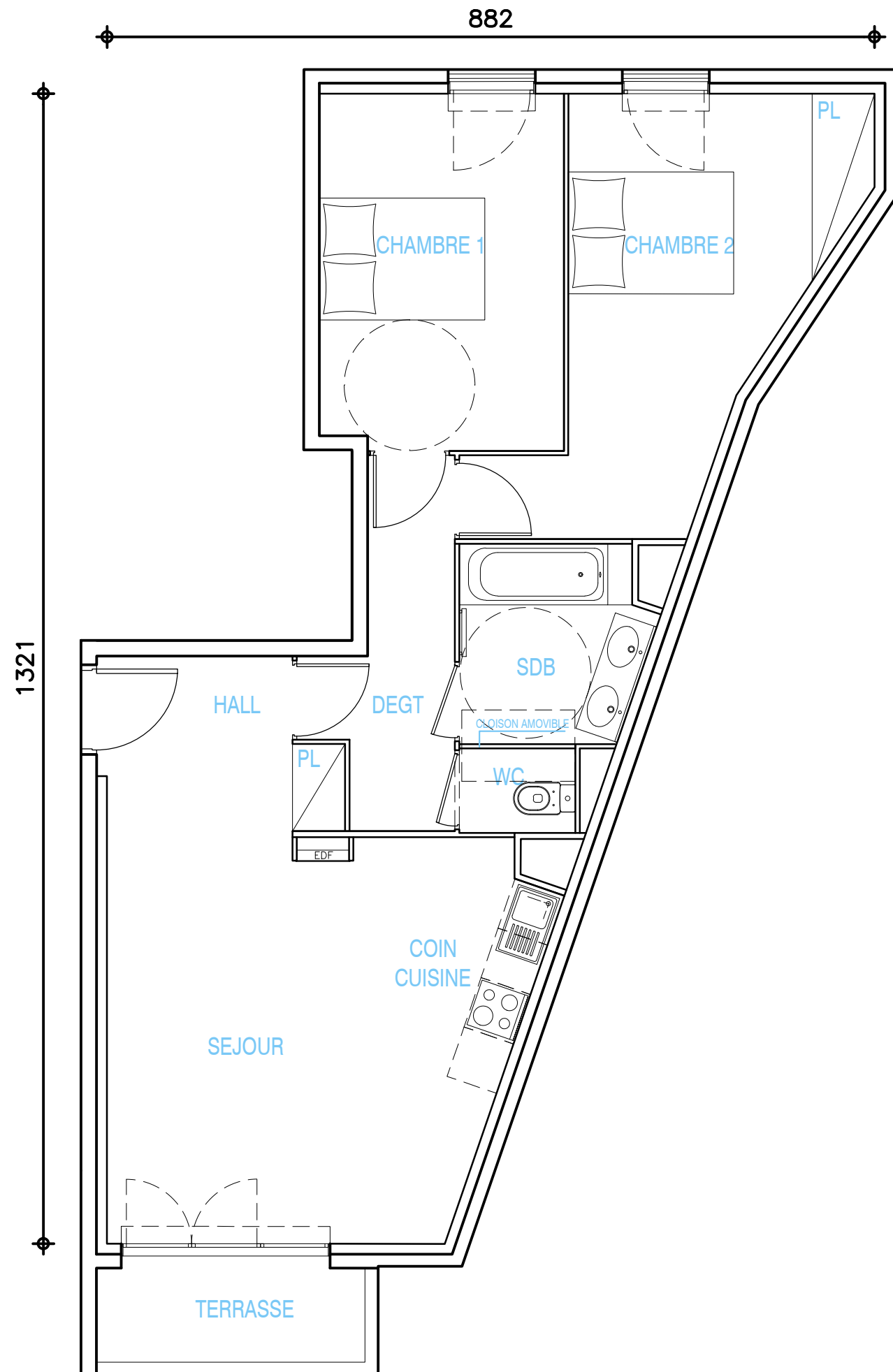


# LE CLOS D'ELIE



**APPARTEMENT**

**T3**

BATIMENT	A	
N°	12	
NIVEAU	R+2	
HALL+ PL	5.20	M2
DEGT	5.33	M2
SEJOUR / COIN CUISINE	21.27	M2
SDB	4.70	M2
WC	1.29	M2
CHAMBRE 1	11.43	M2
CHAMBRE 2 + PL	14.22	M2
<b>SURFACE HABITABLE</b>	<b>63.44</b>	<b>M2</b>
TERRASSE	3.33	M2
<b>SURFACE TOTALE</b>	<b>66.77</b>	<b>M2</b>



**TAGERIM**  
PROMOTION