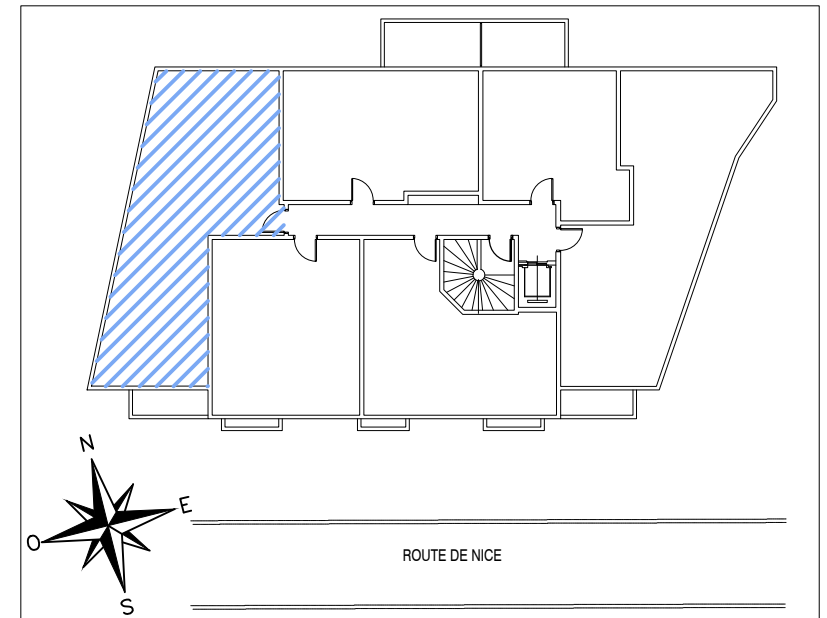
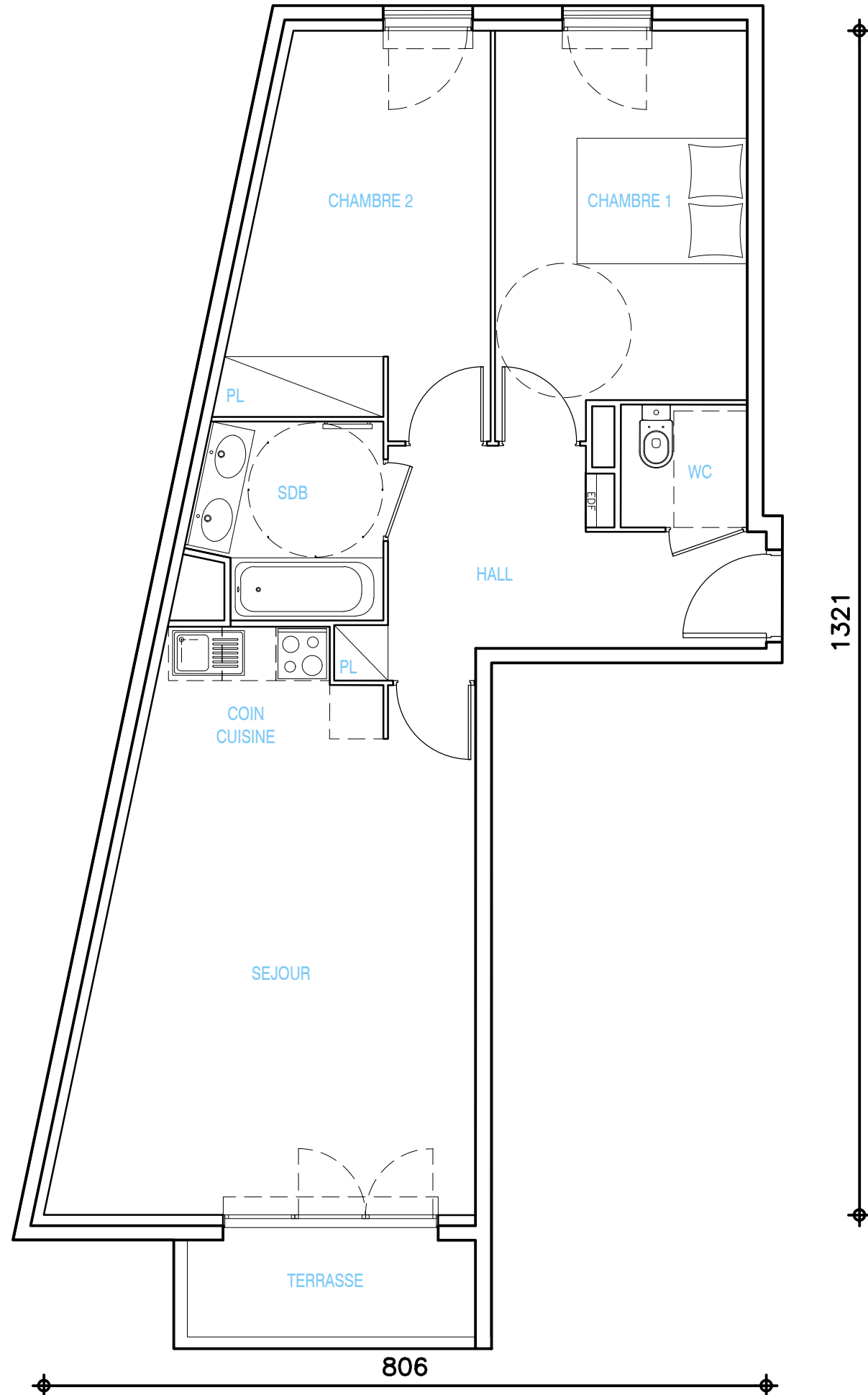


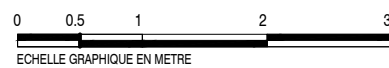
LE CLOS D'ELIE



APPARTEMENT

T3

BATIMENT	A	
N°	15	
NIVEAU	R+3	
HALL + PL	8.33	M2
SEJOUR / COIN CUISINE	25.98	M2
SDB	4.33	M2
WC	1.93	M2
CHAMBRE 1	12.06	M2
CHAMBRE 2 + PL	11.72	M2
SURFACE HABITABLE	64.35	M2
TERRASSE	3.48	M2
SURFACE TOTALE	67.83	M2



TAGERIM
PROMOTION