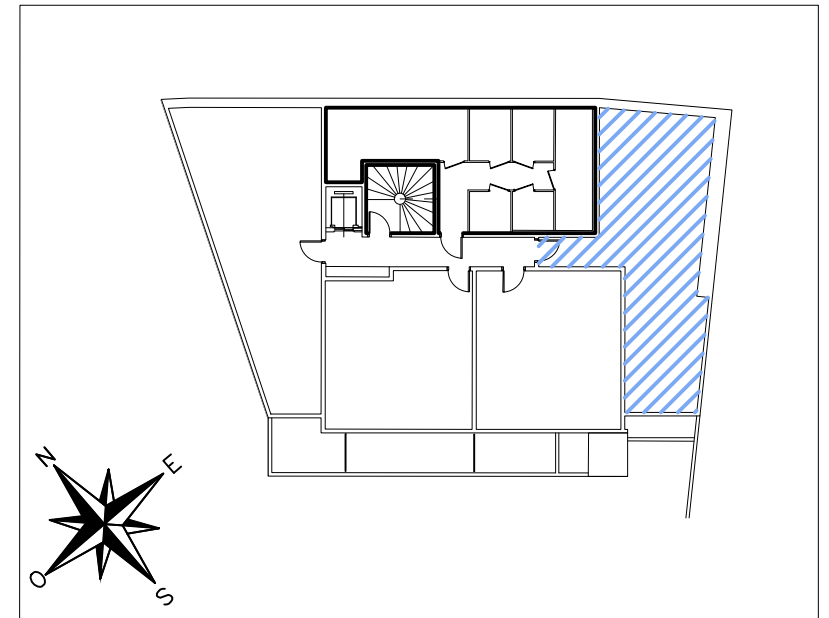
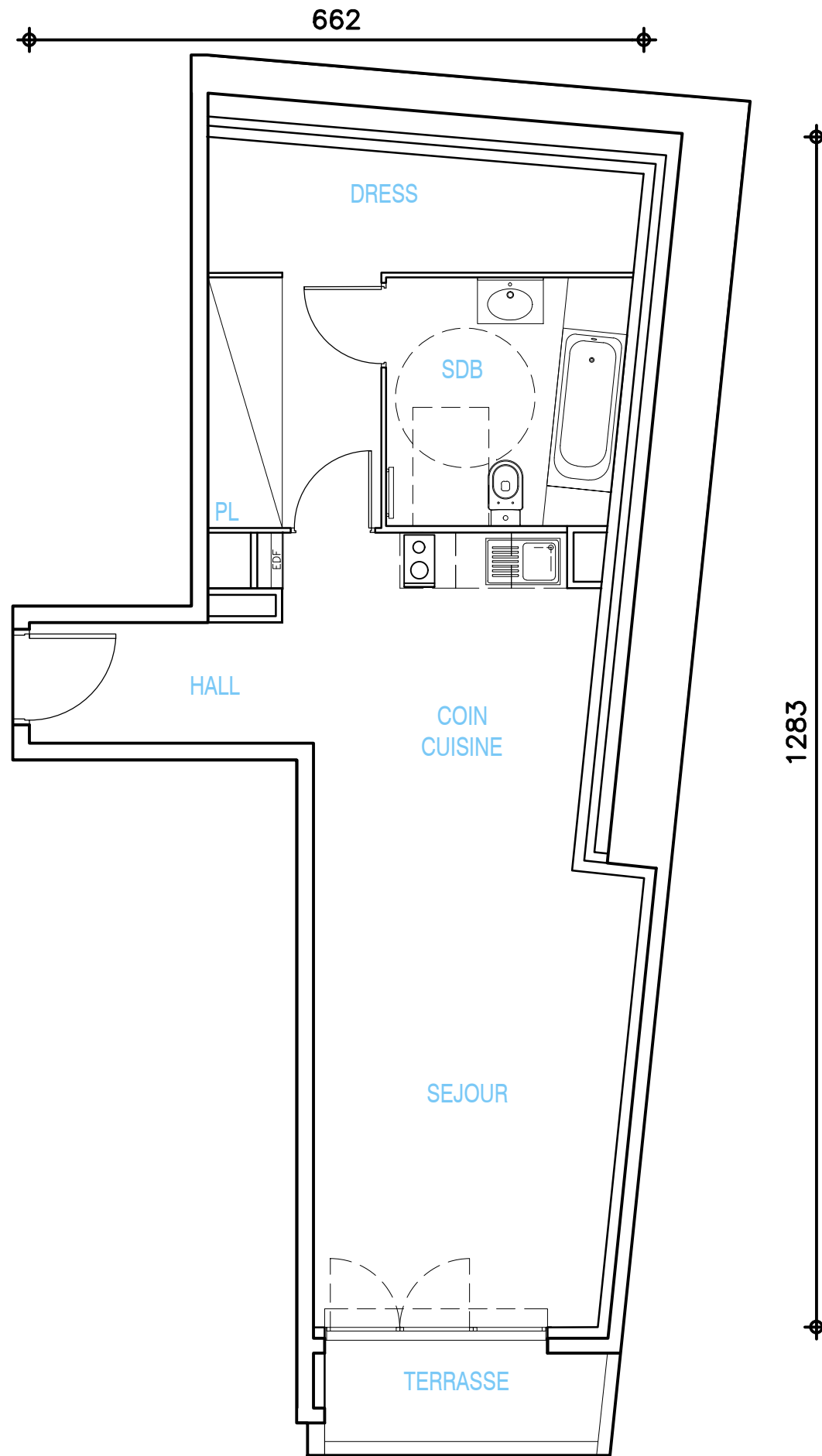


# LE CLOS D'ELIE



## APPARTEMENT T1

BATIMENT	B
N°	19
NIVEAU	RDC
HALL	3.54 M2
SEJOUR / COIN CUISINE	27.63 M2
SDB / WC	6.76 M2
DRESS + PL	10.96 M2
<b>SURFACE HABITABLE</b>	<b>48.89 M2</b>
TERRASSE	2.85 M2
<b>SURFACE TOTALE</b>	<b>51.74 M2</b>



LE PRESENT DOCUMENT EST SUSCEPTIBLE DE MODIFICATIONS TECHNIQUES OU ADMINISTRATIVES

**TAGERIM**  
PROMOTION