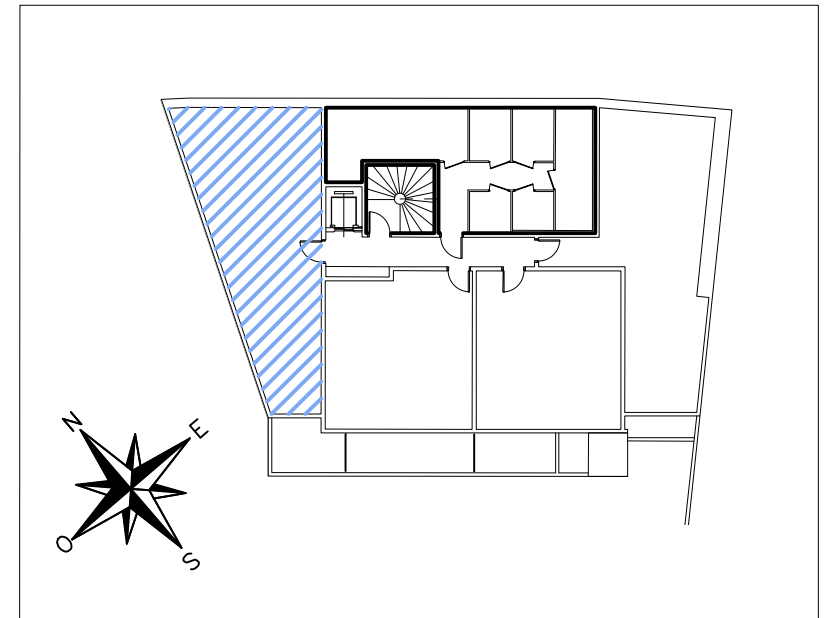
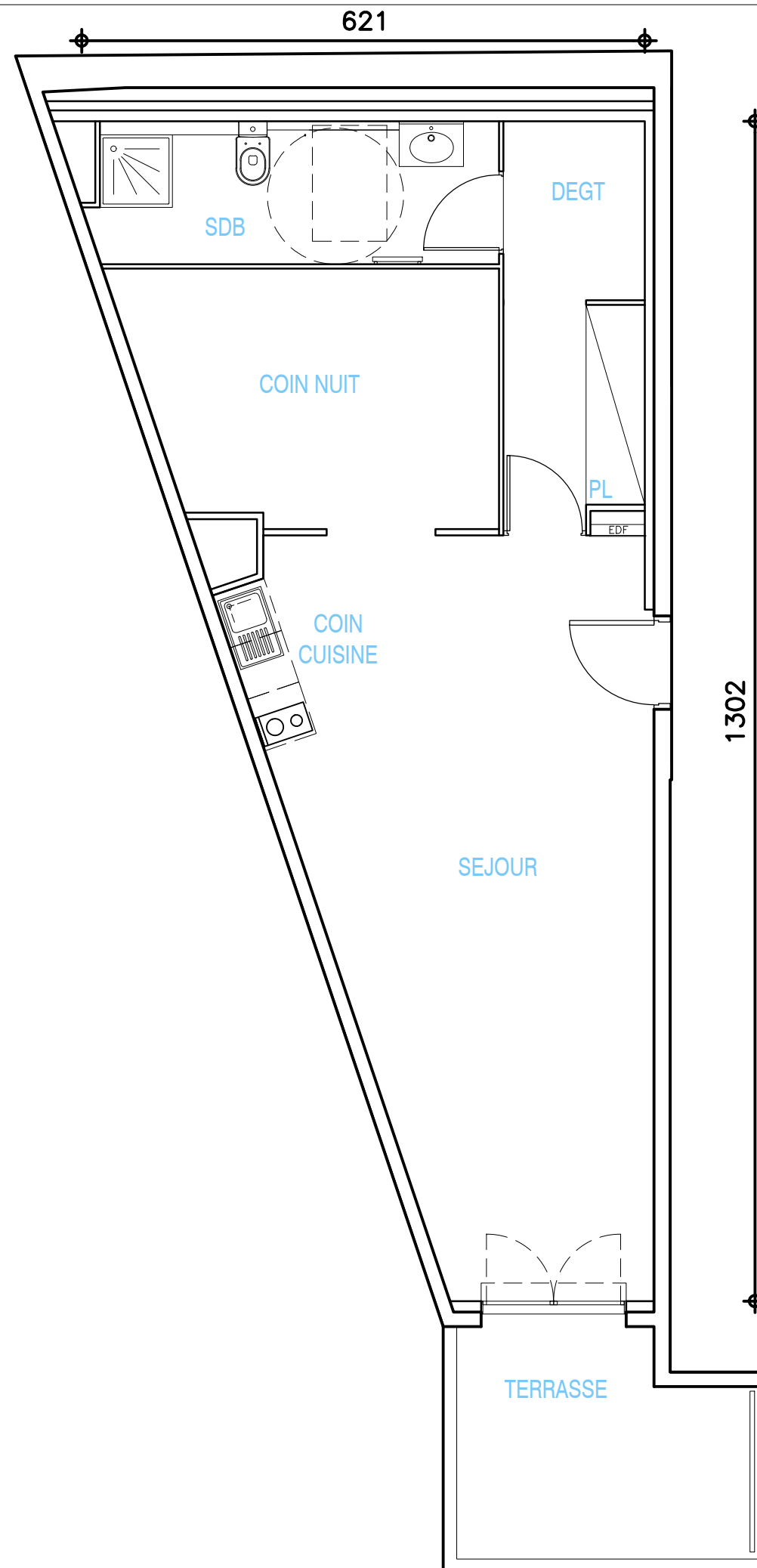


LE CLOS D'ELIE



APPARTEMENT

T1

BATIMENT	B	
N°	22	
NIVEAU	RDC	
SEJOUR / COIN CUISINE	30.56	M2
COIN NUIT	11.03	M2
SDB / WC	7.00	M2
DEGT + PL	6.83	M2
SURFACE HABITABLE	55.42	M2
TERRASSE	7.46	M2
SURFACE TOTALE	62.88	M2

0 0.5 1 2 3
ECHELLE GRAPHIQUE EN METRE

LE PRESENT DOCUMENT EST SUSCEPTIBLE DE MODIFICATIONS TECHNIQUES OU ADMINISTRATIVES

TAGERIM
PROMOTION