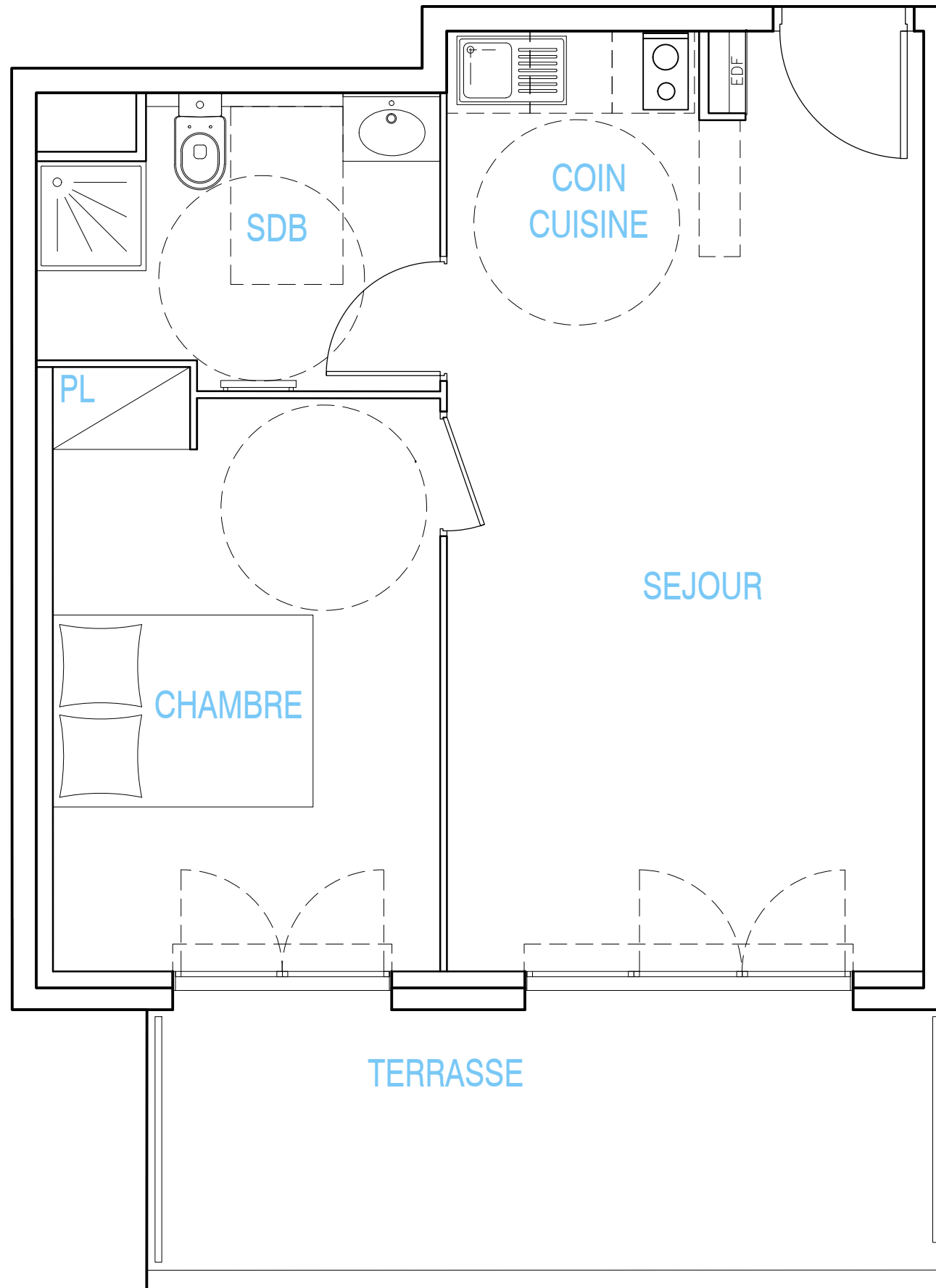


LE CLOS D'ELIE

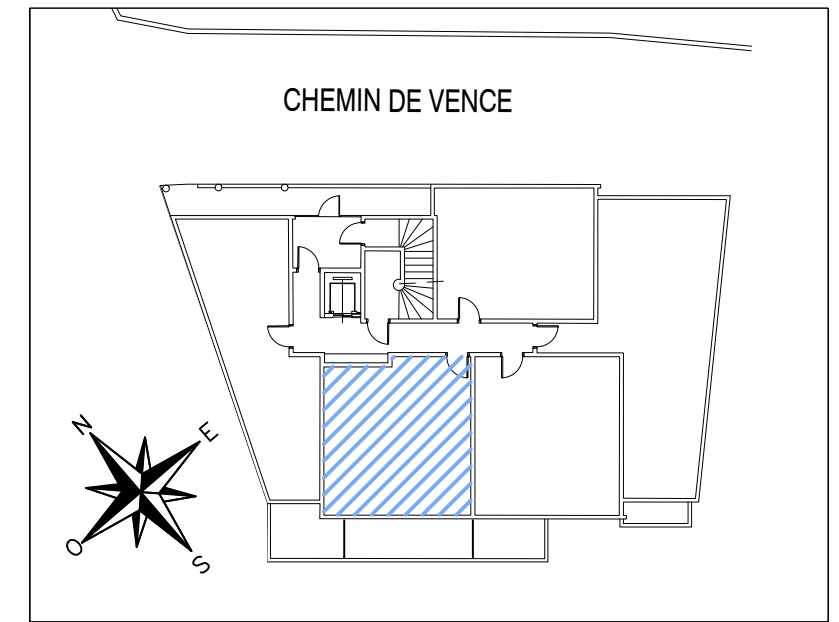


686

648

0 0.5 1 2 3

ECHELLE GRAPHIQUE EN METRE



APPARTEMENT

T2

BATIMENT	B
N°	30
NIVEAU	R+2
SEJOUR / COIN CUISINE	23.66 M2
SDB / WC / PL	5.76 M2
CHAMBRE	12.03 M2
SURFACE HABITABLE	41.45 M2
TERRASSE	10.41 M2
SURFACE TOTALE	51.86 M2

TAGERIM
PROMOTION