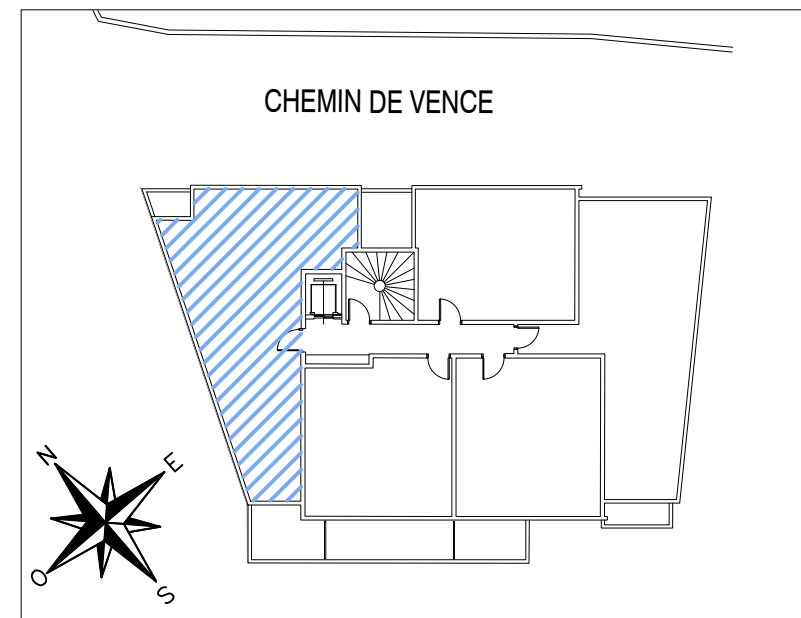
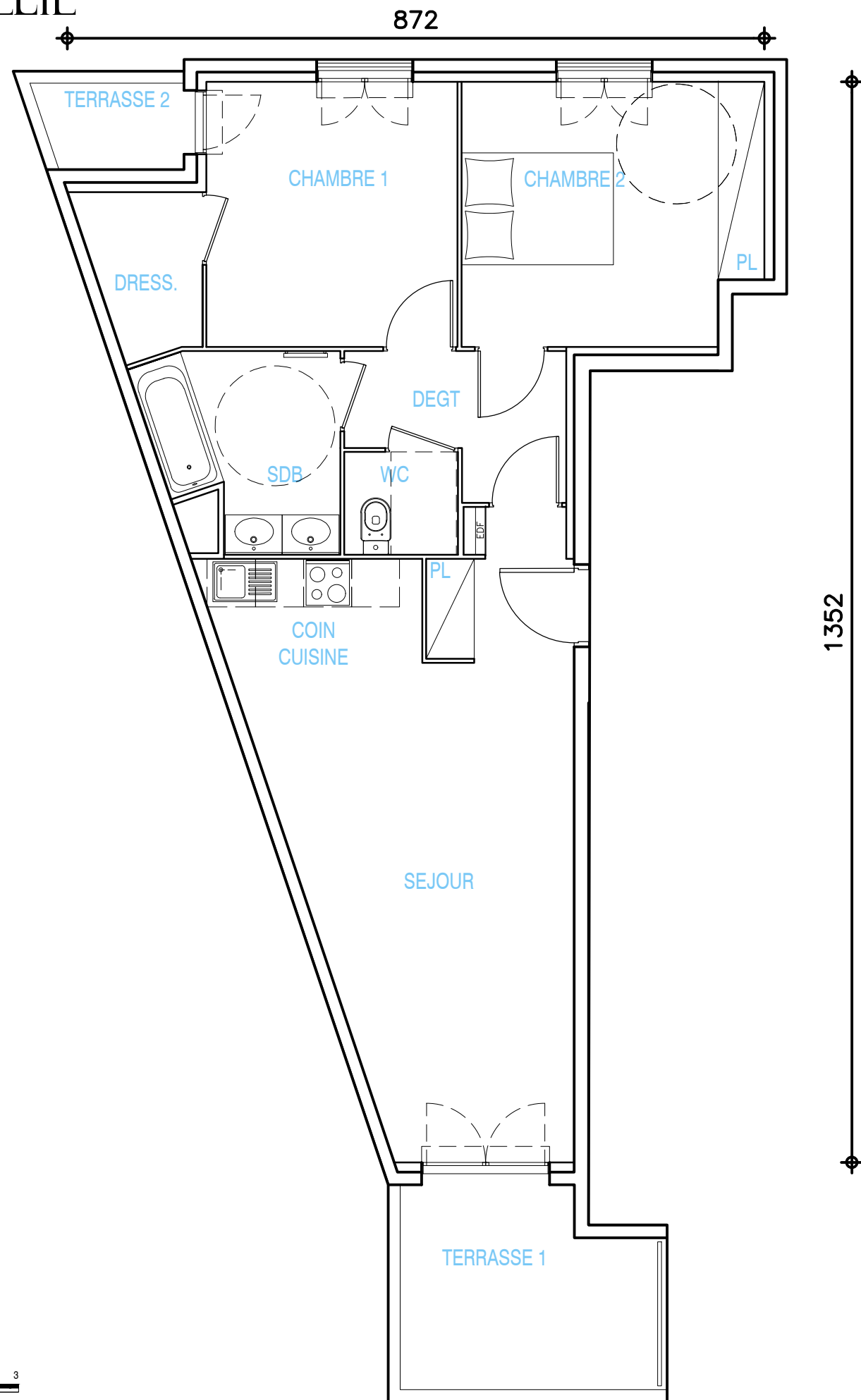


# LE CLOS D'ELIE



**APPARTEMENT**

**T3**

BATIMENT	B	
N°	36	
NIVEAU	R+3	
DEGT	4.26	M2
SEJOUR / COIN CUISINE/PL	27.16	M2
WC	1.83	M2
SDB	5.36	M2
CHAMBRE 1	10.42	M2
DRESS	2.73	M2
CHAMBRE 2 +PL	12.08	M2
<b>SURFACE HABITABLE</b>	<b>63.84</b>	<b>M2</b>
TERRASSE 1	7.44	M2
TERRASSE 2	1.89	M2
<b>SURFACE TOTALE</b>	<b>73.17</b>	<b>M2</b>

**TAGERIM**  
PROMOTION