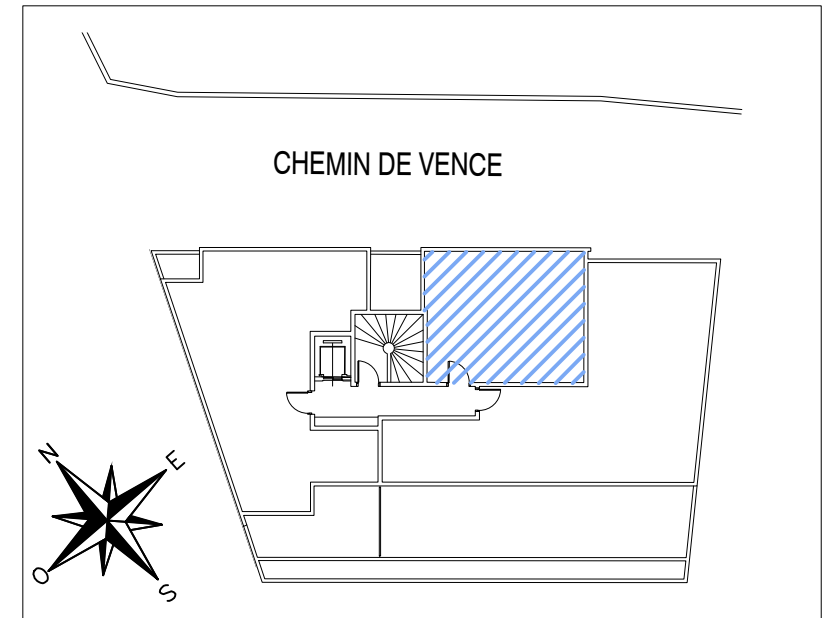
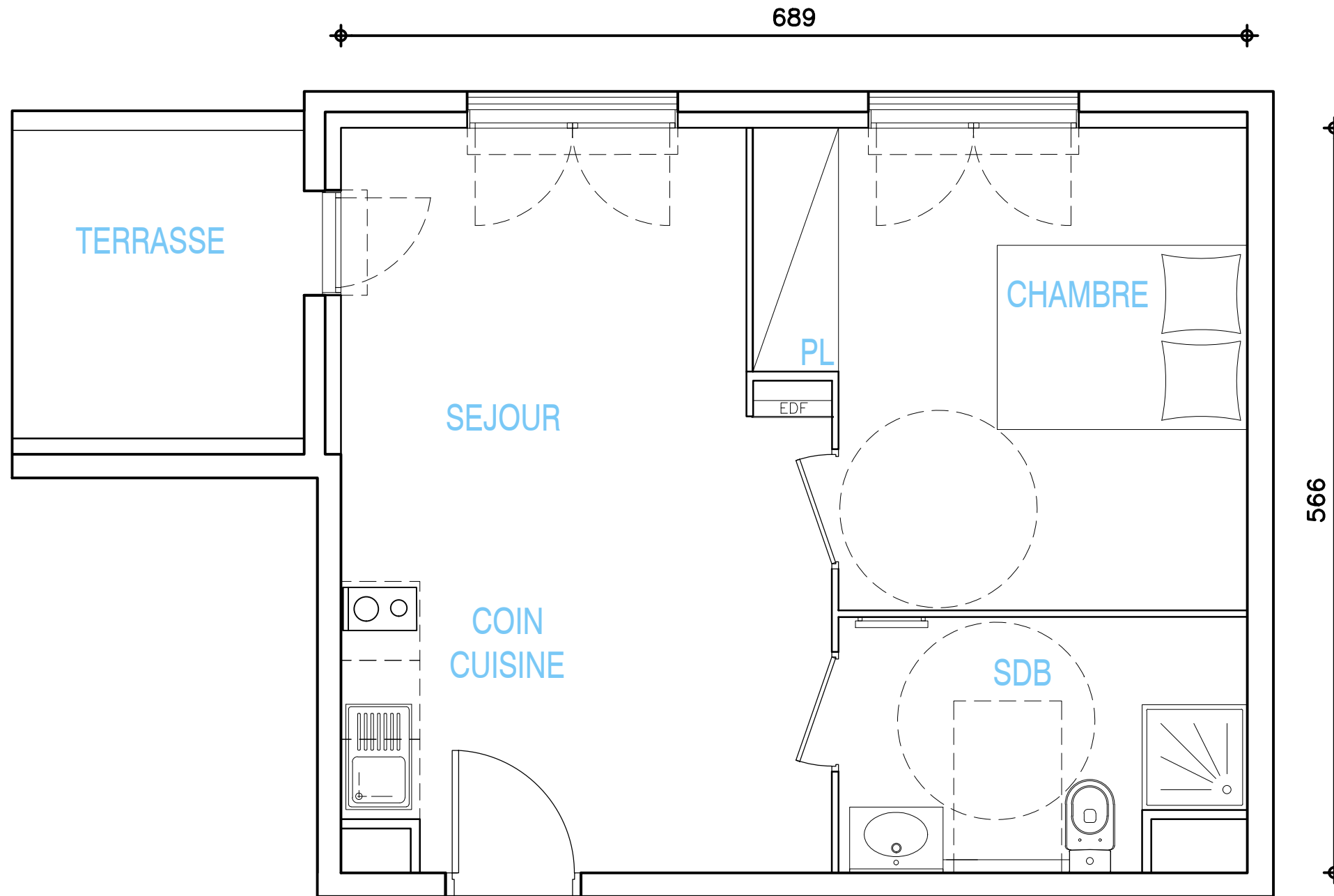


LE CLOS D'ELIE



APPARTEMENT T2

BATIMENT	B
N°	37
NIVEAU	R+4
SEJOUR / COIN CUISINE	19.46 M2
SDB / WC	5.66 M2
CHAMBRE + PL	12.60 M2
SURFACE HABITABLE	37.72 M2
TERRASSE	5.19 M2
SURFACE TOTALE	42.91 M2



LE PRESENT DOCUMENT EST SUSCEPTIBLE DE MODIFICATIONS TECHNIQUES OU ADMINISTRATIVES

TAGERIM
PROMOTION