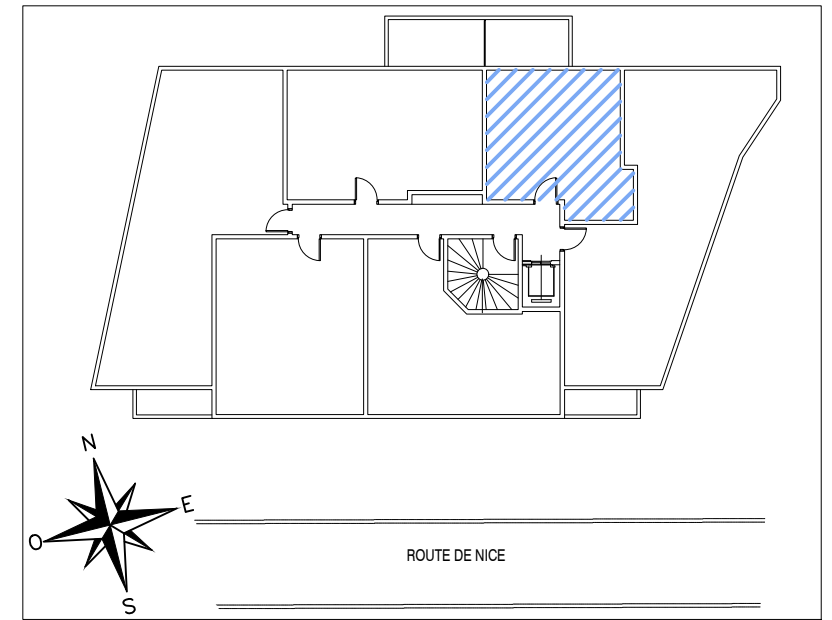
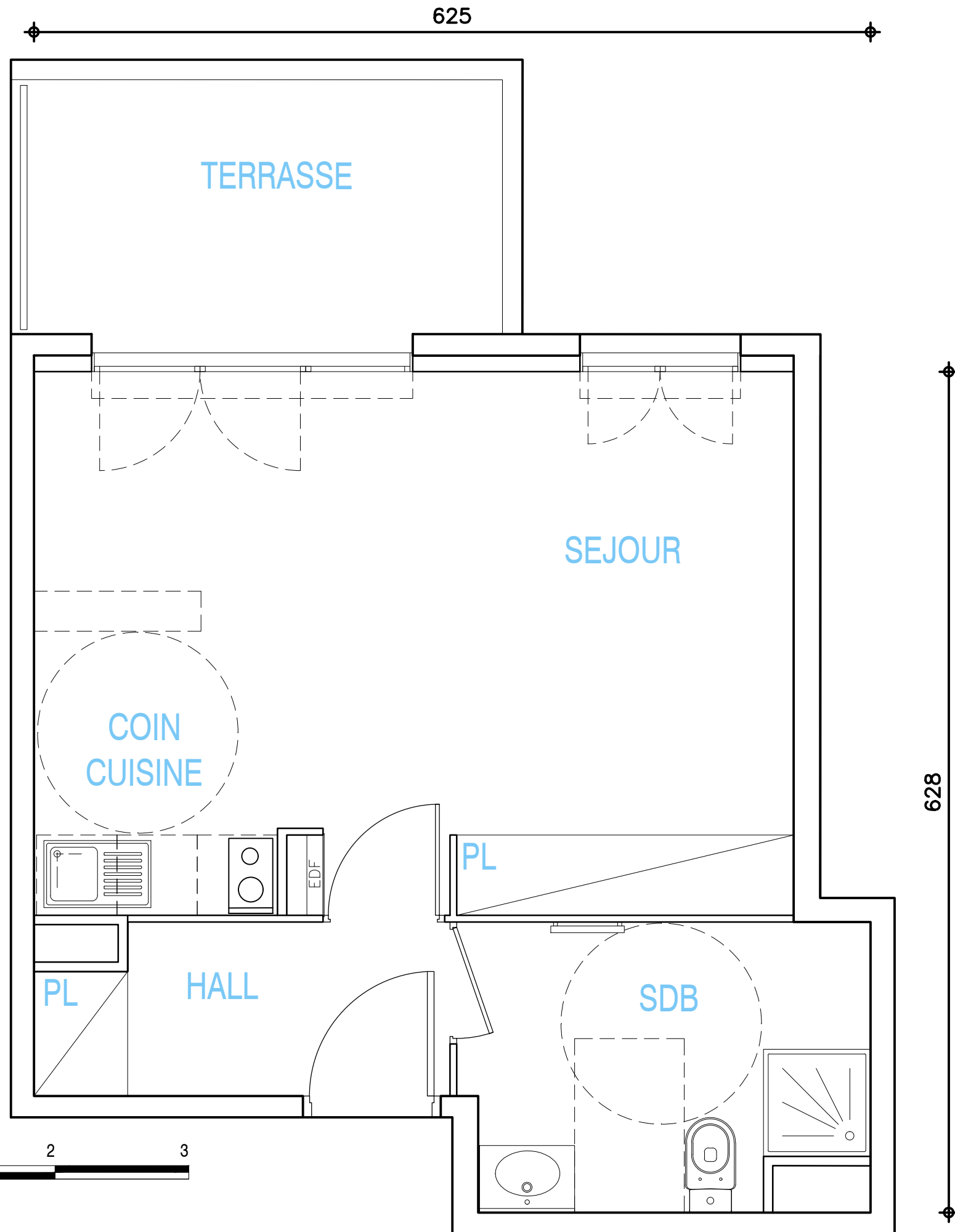


LE CLOS D'ELIE



APPARTEMENT

T1

BATIMENT	A
N°	05
NIVEAU	R+1
HALL + PL	3.78 M2
SEJOUR / COIN CUISINE/PL	22.80 M2
SDB / WC	6.23 M2
SURFACE HABITABLE	32.81 M2
TERRASSE	6.65 M2
SURFACE TOTALE	39.46 M2

TAGERIM
PROMOTION