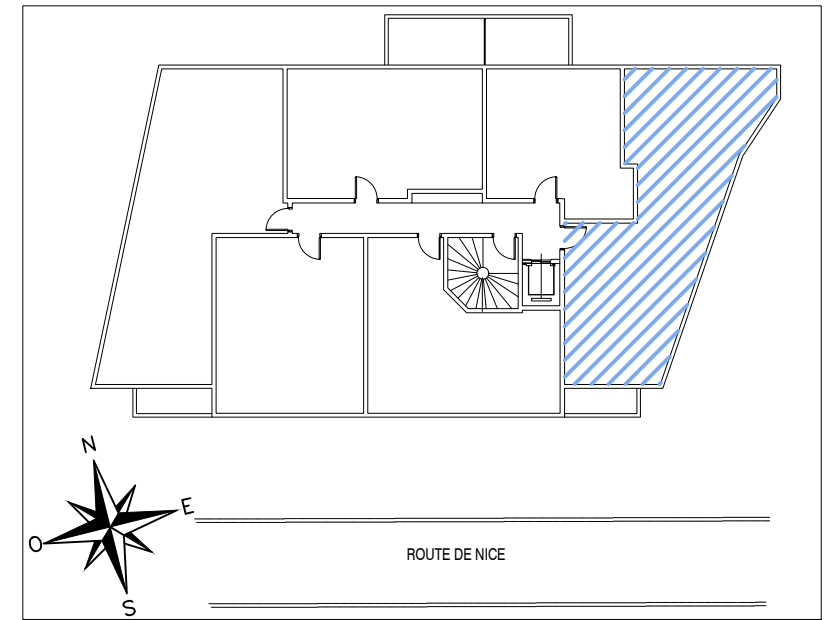
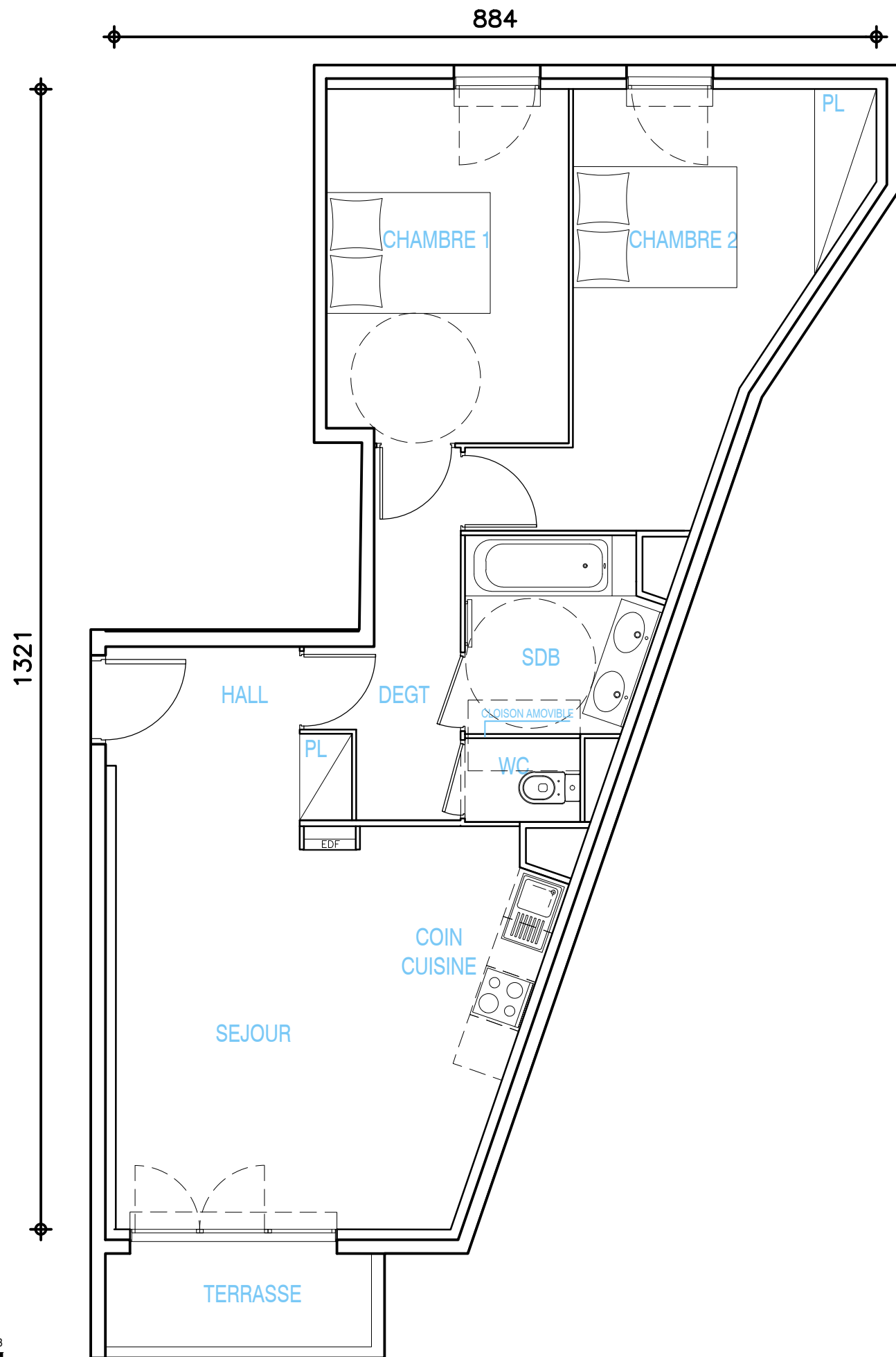


LE CLOS D'ELIE



APPARTEMENT

T3

BATIMENT	A	
N°	06	
NIVEAU	R+1	
HALL+ PL	5.20	M2
DEGT	5.33	M2
SEJOUR / COIN CUISINE	21.27	M2
SDB	4.70	M2
WC	1.29	M2
CHAMBRE 1	11.43	M2
CHAMBRE 2 + PL	14.22	M2
SURFACE HABITABLE	63.44	M2
TERRASSE	3.33	M2
SURFACE TOTALE	66.77	M2

0 0.5 1 2 3
ECHELLE GRAPHIQUE EN METRE

TAGERIM
PROMOTION